

We can't find your machine automatically



Try the following steps to help us out:

- Is your machine type set correctly?

Machine

Other (grbl) ▼

Model

DIY CNC Router Kits 3018 ▼

- Make sure your machine is connected to your USB port
- Stop any programs that also are automatically using serial ports, like MakerWare
- If you have Easel open in any other browser tabs or windows, try closing them
- Try plugging the machine into a different USB port on your computer

☐ **Enter COM port manually**

If we still aren't detecting your machine, submit diagnostic info with the button below, and then report a problem using the 'Help' menu. Please tell us your operating system, browser, and version of your machine control software.

Submit diagnostic info

Ok

Enter your machine details

Select the settings that match your machine.

Machine type	Other (grbl) ▼
Model	DIY CNC Router Kits 3018 ▼
Motion Controller	Arduino & gShield ▼
Rail size	500mm x 500mm ▼
Lead screw	M8 threaded rod (discontinued Sept 2016) ▼
Spindle	24V DC Spindle ▼
Dust shoe	<input type="checkbox"/>

You must use the correct settings for your machine to run correctly.

Confirm settings

Enter your machine details

Select

Connecting to Other (grbl)...

Enter the COM port your machine is connected to

COM

To find the port, open the Control Panel and click "View devices and printers". Your Arduino should be listed with the COM port. [Having trouble?](#)

Cancel

**ingresar numero
de puerto**

You must use the correct settings for your machine to run correctly.






Confirm settings

Test your wiring

Now we'll test that your motors are wired correctly. Test each axis using the controls and confirm that each axis moves correctly. We'll troubleshoot any axes that aren't working in the next step.

If you have homing switches, be careful jogging your machine. The switches are currently disabled and can easily be crushed.


Working correctly?

X			Yes	No
Y			Yes	No
Z			Yes	No

Continue

Spindle settings

Should Easel control your spindle automatically or would you prefer to turn it on and off manually?



Spindle control preference

Automatic ▼

Save spindle preference

Test the spindle

Let's make sure your spindle is hooked up for automatic control.

Turn spindle on

Spindle not turning on?

Continue

Homing switch setup

Does your machine have homing switches?

Yes, enable homing



No, disable homing

Do you have a Z-Probe?

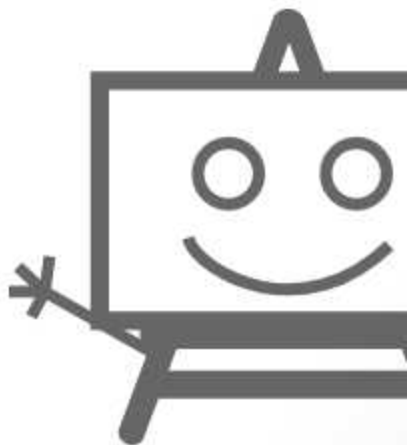


Yes

No

That's it! You're ready to carve!

Hooray! You finished setting up your machine!



Run the test carve

Finish